



Rabbit anti Catenin gamma Polyclonal Antibody

Alternative Name(s): CTNNG

Order Information

- **Description:** Catenin gamma
- **Catalogue:** 500-3684
- **Lot:** See label
- **Size:** 100ug/200ul
- **Host:** Rabbit
- **Clone:** nan
- **Application:** IHC(P), WB, IP
- **Reactivity:** Hu, Ms, Rt

ANTIGEN PREPARATION

A synthetic peptide corresponding to the internal segment of human Catenin gamma

BACKGROUND

Beta-catenin is a cytosolic, 88 kDa, 781 amino acid protein belongs to the β -catenin family. The N-terminus domain, containing the binding site and the phosphorylation sites. Beta-Catenin serves as a link between cytoskeleton actin and transmembrane cadherin(s). It is believed to contribute to tight cell-to-cell adhesion. It can enter the nucleus and interact with the TCF/LEF family of transcription factors, initiating gene expression. Normally, β -catenin transcriptional activity is suppressed by a Ser/Thr kinase termed GSK3 β and/or Casein Kinase I (CK1). Kinases are constitutively active and phosphorylates β -catenin at multiple sites, including S33 and S37, Y96, Y228, Y280 etc. Phosphorylation of β -catenin targets the molecule for degradation via a ubiquitination-mediated pathway. GSK3 β activity can be blocked by upstream signaling events such as Wnt-Frizzled interaction. This inhibits GSK3 β , allowing unphosphorylated β -catenin to enter the nucleus and initiate gene activation. The phosphorylation of beta-catenin might contribute to tumorigenesis.

PURIFICATION

The Rabbit IgG is purified by Epitope Affinity Purification

FORMULATION

This affinity purified antibody is supplied in sterile Phosphatebuffered saline (pH7.2) containing antibody stabilizer

SPECIFICITY

This antibody recognizes Catenin gamma protein. It reacts to human, mice and rat. The other species not tested.

STORAGE

The antibodies are stable for 24 months from date of receipt when stored at -20°C to -70°C . The antibodies can be stored at 2°C - 8°C for three month without detectable loss of activity. Avoid repeated freezing-thawing cycles.

APPLICATIONS/SUGGESTED WORKING DILUTIONS*

- Western Blot: 0.1-1 $\mu\text{g/ml}$
- ELISA: 0.01-0.1 $\mu\text{g/ml}$
- Immunoprecipitation: 2-5 $\mu\text{g/ml}$
- IHC: 2-10 $\mu\text{g/ml}$
- Flow cytometry: Not tested
- Molecular Weight: 85.0
- Positive Control: Kidney Tissue
- Cellular Location: Cell Membrane

*Optimal dilutions should be determined by researchers for the specific applications.

FOR RESEARCH USE ONLY.

AbboMax, Inc 2528 Qume Drive, Suite 8, San Jose, California 95131, USA
1 408-573-1898 (Tel). 1 408-573-1858 (Fax). www.abbomax.com info@abbomax.com

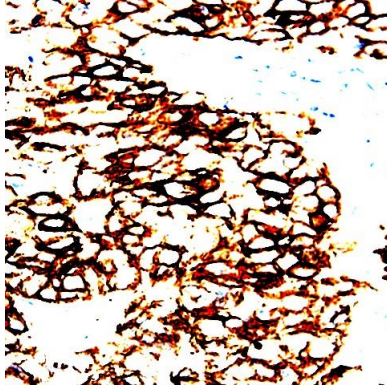


FOR RESEARCH USE ONLY.

AbboMax, Inc 2528 Qume Drive, Suite 8, San Jose, California 95131, USA
1 408-573-1898 (Tel). 1 408-573-1858 (Fax). www.abbomax.com info@abbomax.com



DATA ATTACHMENTS



Immunohistochemistry: Human breast carcinoma (FFPE) stained with Rabbit anti-Catenin-gamma (Cat# 500-3684) at 1:200 for 10 min @ RT. Staining of formalin-fixed tissue requires boiling tissue sections in 10 mM Citrate Buffer, pH 6.0 for 10 min followed by cooling at RT for 20 min.

REFERENCES

FOR RESEARCH USE ONLY.

AbboMax, Inc 2528 Qume Drive, Suite 8, San Jose, California 95131, USA
1 408-573-1898 (Tel). 1 408-573-1858 (Fax). www.abbomax.com info@abbomax.com